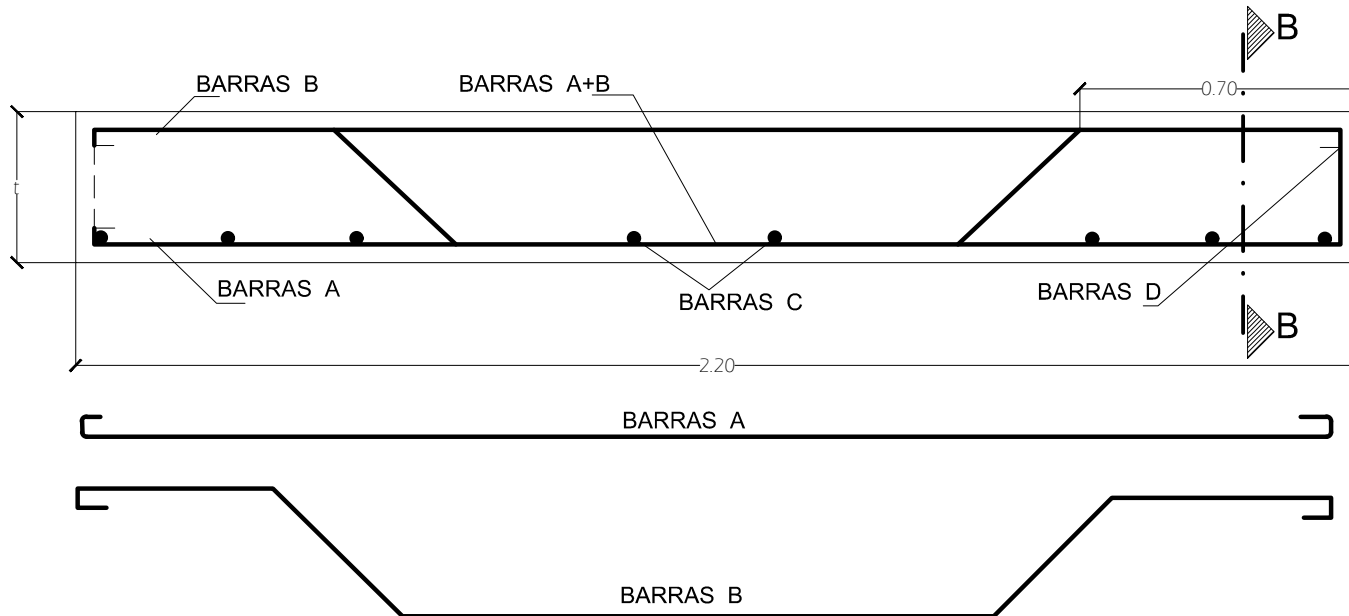


TIPO DE HORMIGON:
 CRUCE VEHICULOS - CLASE A
 CRUCE PEATONES - CLASE C

ENTRADA	b (m)	1 (m)	ARMADURA				HORM. (m)	ACEREO qq		
			A	B	C	D		∅ 3/8"	∅ 1/2"	∅ 3/4"
VEHICULOS	0.75	0.18	2 ∅3/4" L=2.44	2 ∅3/4" L=2.59	∅1/2" L=0.91	2∅1/2" L=1.37	0.30	-	0.18	0.62
PEATONES	0.50	0.15	1 ∅3/8" L=2.29	2 ∅3/8" L=2.59	6∅3/8" L=0.61	4∅3/8" L=1.22	0.17	0.20	-	-

DATOS ADICIONALES



SECCION LONGITUDINAL LOSETA Y ARMADURA

LOSETA STANDARD PARA CRUCE PEATONAL Y DE VEHICULOS